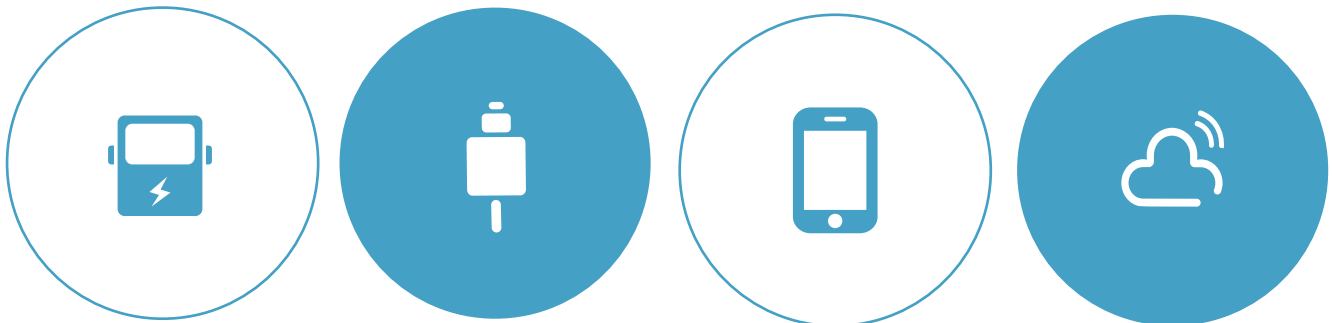


INTRODUCTION

IGEN Tech Co., Ltd., founded in 2009, a high-tech enterprise, is professional in innovative applications based on technologies of IoTs, cloud computing and big data. Being focus on energy field for 12 years, the company has integrated state-of-the-art technologies into energy system, and has developed a complete solution including hardware, software and data analysis to offer smart energy for global customers.

SOLARMAN is a brand of IGEN-Tech, specialized in intelligent PV solutions. SOLARMAN product has been a global leading PV monitoring and management platform, which covers the whole life cycle of PV station and provides differentiated solutions for distinct users.



Products and Services

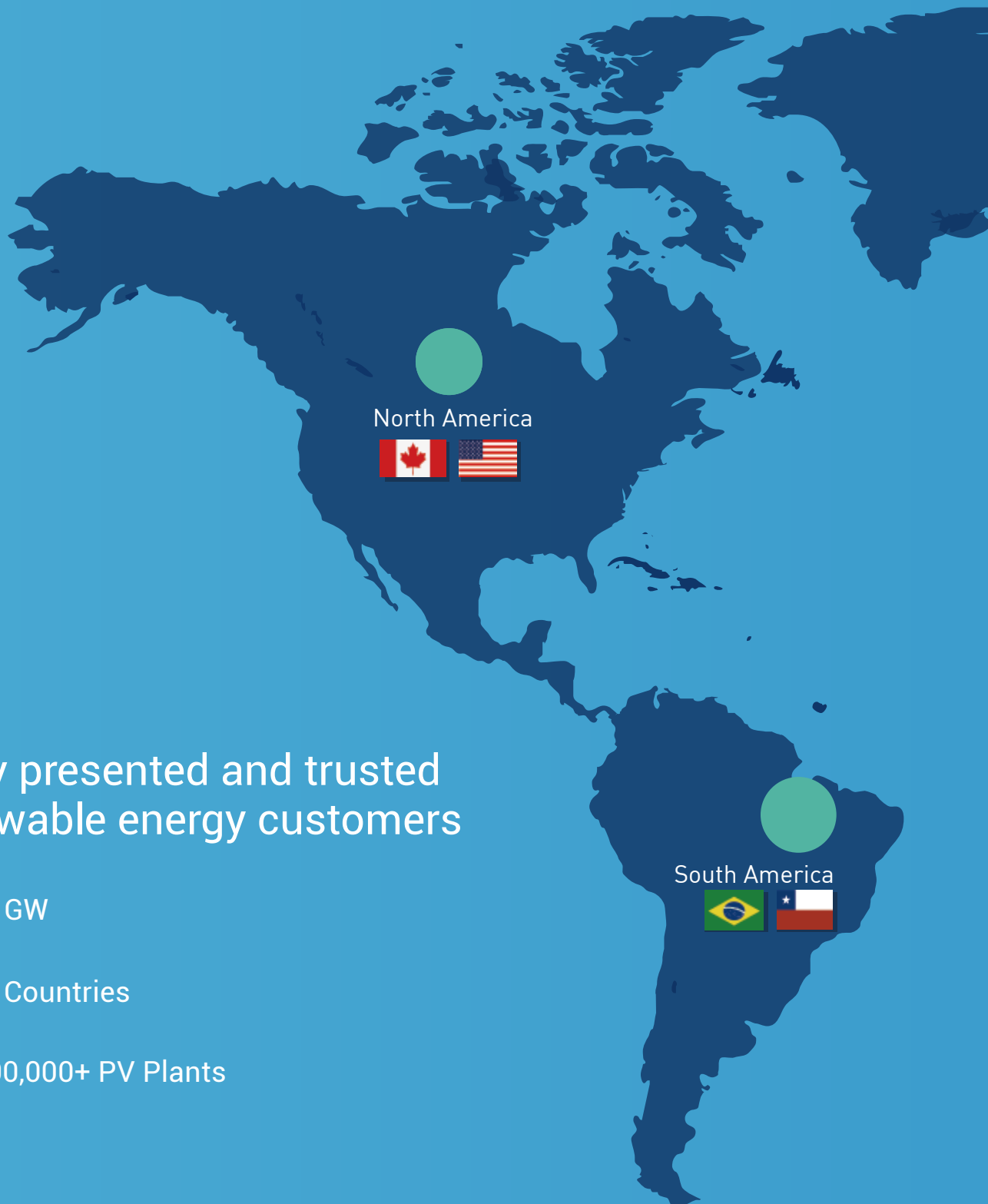
- Different types of external data loggers
- Embedded monitoring module for inverters
- Smart meters and sockets
- Weather stations

- Web-based monitoring portal
- Monitoring app and dashboard
- Customerized software platform

CONTENT

| | |
|----|--|
| 01 | Introduction |
| 03 | SOLARMAN Business and Presence |
| 05 | Residential Solution - Home Energy Management |
| 06 | Commercial&Industrial Solution - Plant Energy Management |
| 07 | Overview of SOLARMAN Software |
| 08 | SOLARMAN Business - Device Access, Control and Data Processing |
| 09 | SOLARMAN Business - PV Plant Management |
| 10 | SOLARMAN Smart - An Energy Expert Around You |
| 11 | SOLARMAN Hardware |
| 11 | Stick Logger |
| 13 | Pro Logger |
| 15 | DIN-Rail Logger |
| 18 | Smart Meter |
| 20 | Data Logger |
| 22 | RF Gateway / Stick Logger (RF) |
| 23 | Weather Station |
| 25 | Supported Brands |

SOLARMAN Smart Energy Management System around the world



Globally presented and trusted by renewable energy customers



25+ GW



122 Countries



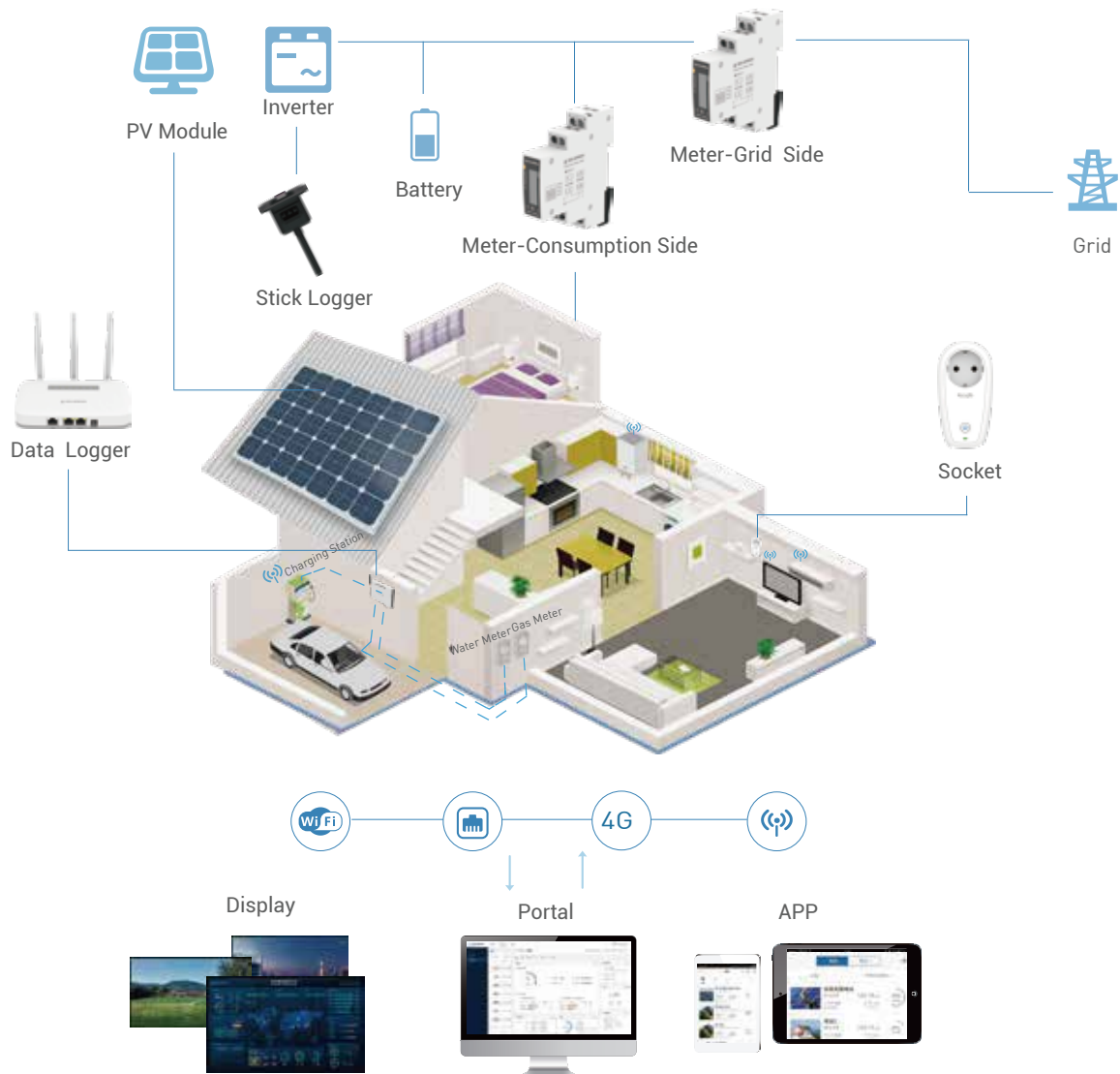
1,000,000+ PV Plants



Residential Solution - Home Energy Management

Wisely managing energy use has been a high priority when households decide to pursue a smart life with sustainable energy, improved efficiency and reduced bills.

By applying advanced technologies of IoTs (Internet of Things) and wireless communication, etc., SOLARMAN products are able to connect a variety of devices in your home, to make your daily operation in a more convenient, more comfortable and more environmentally friendly manner.

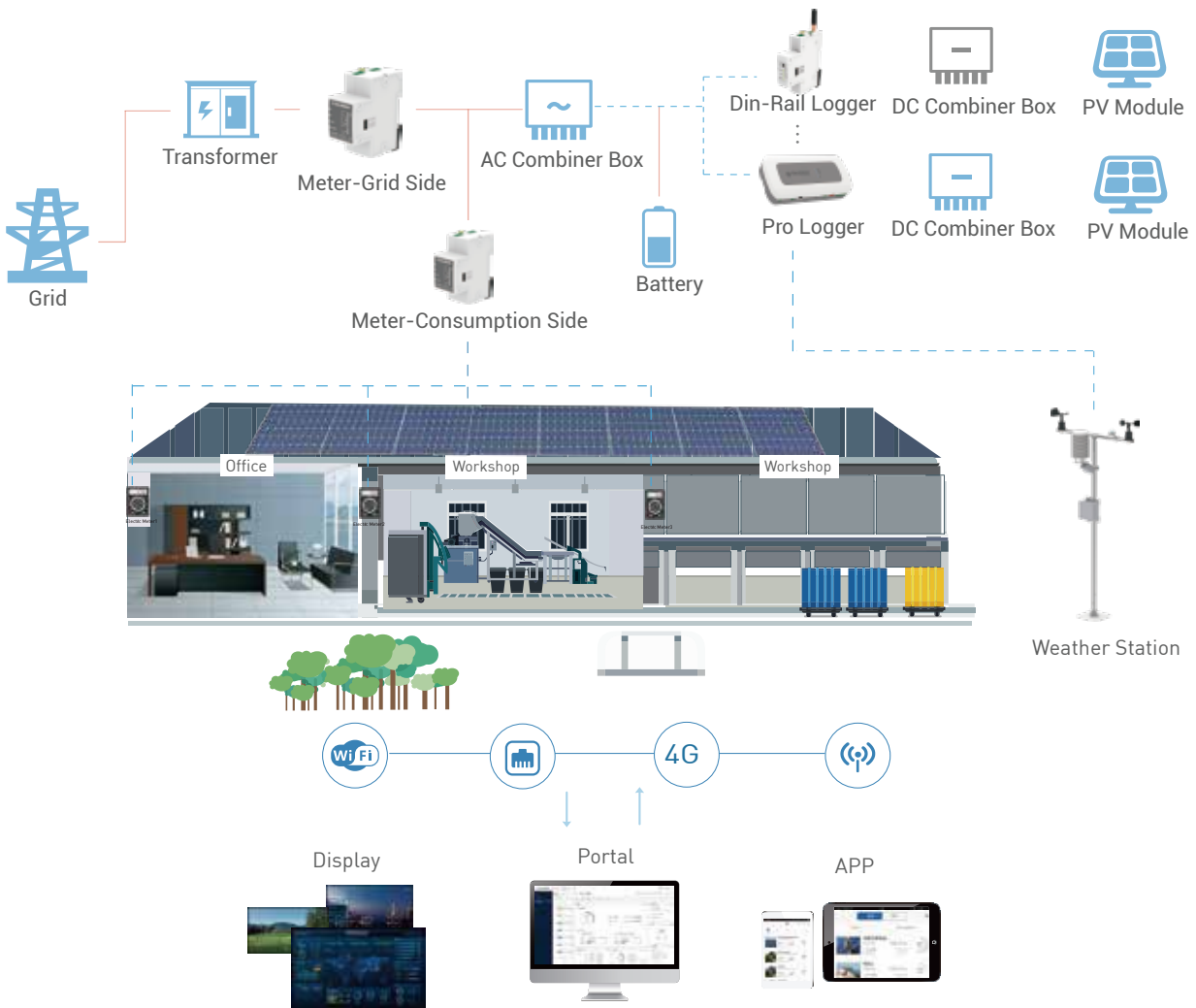


Objectives we can achieve together are

- Precisely reporting real time data of your power generation and energy consumption;
- Visualizing your energy usage pattern and offering smart suggestion if needed;
- Enabling solar panels/batteries to be used more effectively;
- Remotely switching "ON/OFF" status of your home appliances.

Commercial&Industrial Solution - Plant Energy Management

More and more corporates are going green by increasing usage of renewable energy-particularly solar power generated from their plants' and buildings' rooftops, and battery storage is also getting popular in order to leverage renewable energy to the utmost efficiency.



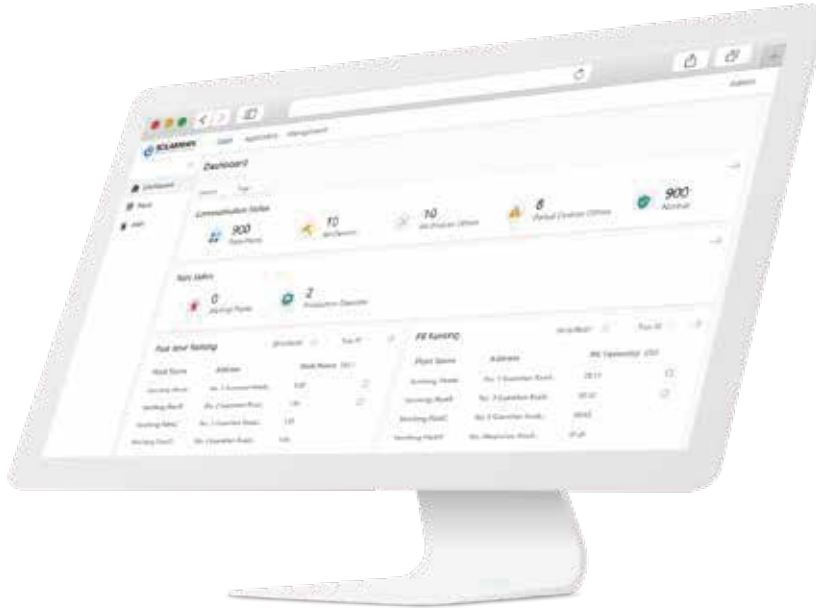
Along the changing approach, SOLARMAN helps customers make smart decisions by

- Recording and analyzing generated power and consumed energy;
- Serving all periods of life-cycle of your PV plants assets, from project evaluation to asset trading;
- Calculating and comparing performance index (i.e. PR) of your PV plants; And giving smart advices for better O&M;

Overview of SOLARMAN Software

With the most reliable hardware devices, functional software and outstanding service, SOLARMAN is the right choice for everyone. It meets requirements of device manufacturer, investor, project developer, EPC and plant owner, etc. Moreover, the tailor-made needs can be easily covered under SOLARMAN modular design.

SOLARMAN software consists of two different products—SOLARMAN Business and SOLARMAN Smart. Both products are available in web-based portal and APPs.



SOLARMAN Business is developed to support professional technical management, covering the full life-cycle of PV plants:



Project evaluation - PV resource analysis, plant simulation, generation/yield forecast, etc.



Plant O&M - Data monitoring and visualizing, fault detecting and troubleshooting, performance rating, etc.

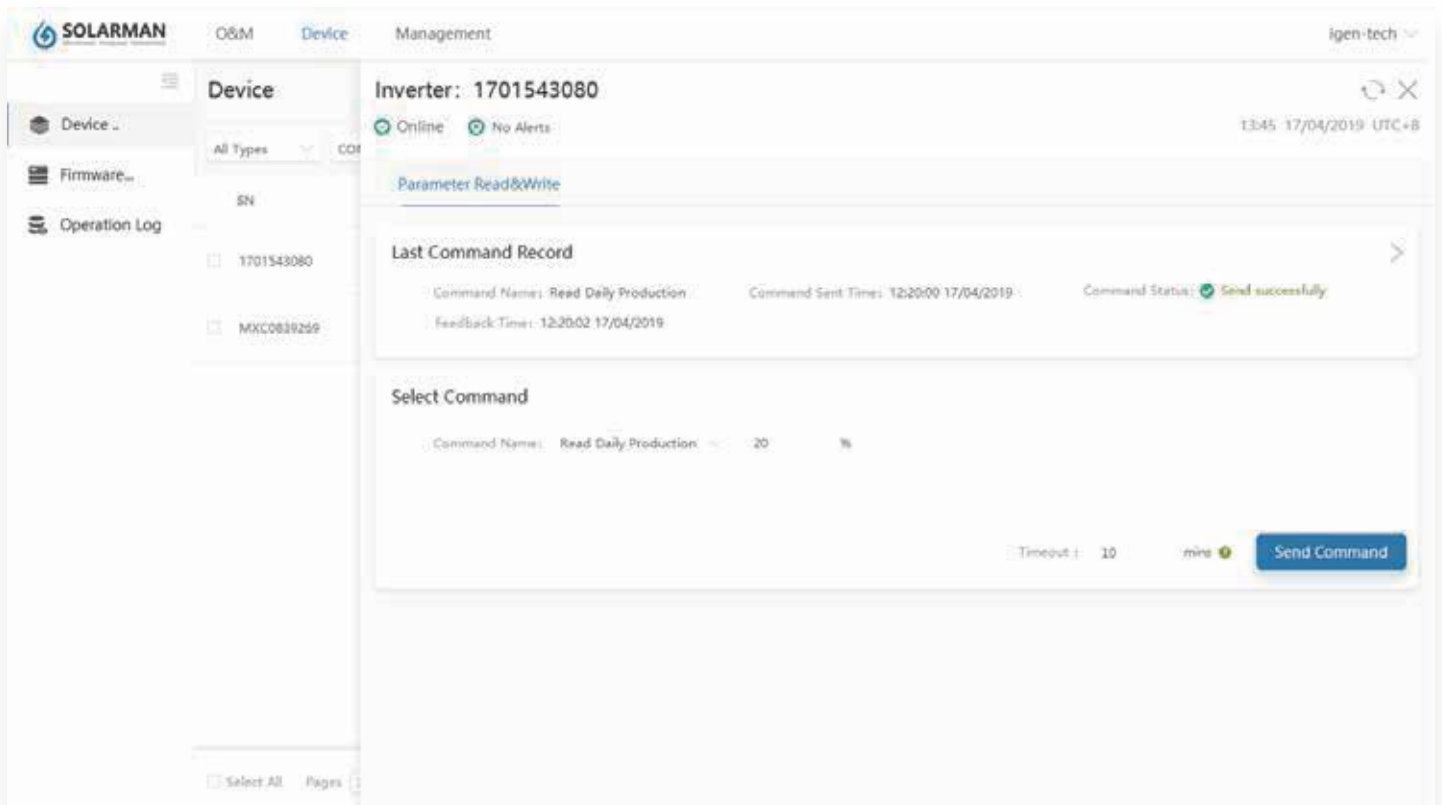


Asset trade - Financial evaluation, cash flow forecast, ROI analysis, etc.

SOLARMAN Smart offers excellent experience to individual users, who can get all important data/information at a glance. The product is designed in simple style, ease of use, perfect for end-users.

SOLARMAN Business - Device Access, Control and Data Processing

SOLARMAN solution is compatible with the inverter models from all major manufacturers and with numerous components, i.e. energy meter, gas meter, weather station, heat pumps and smart plugs, etc.



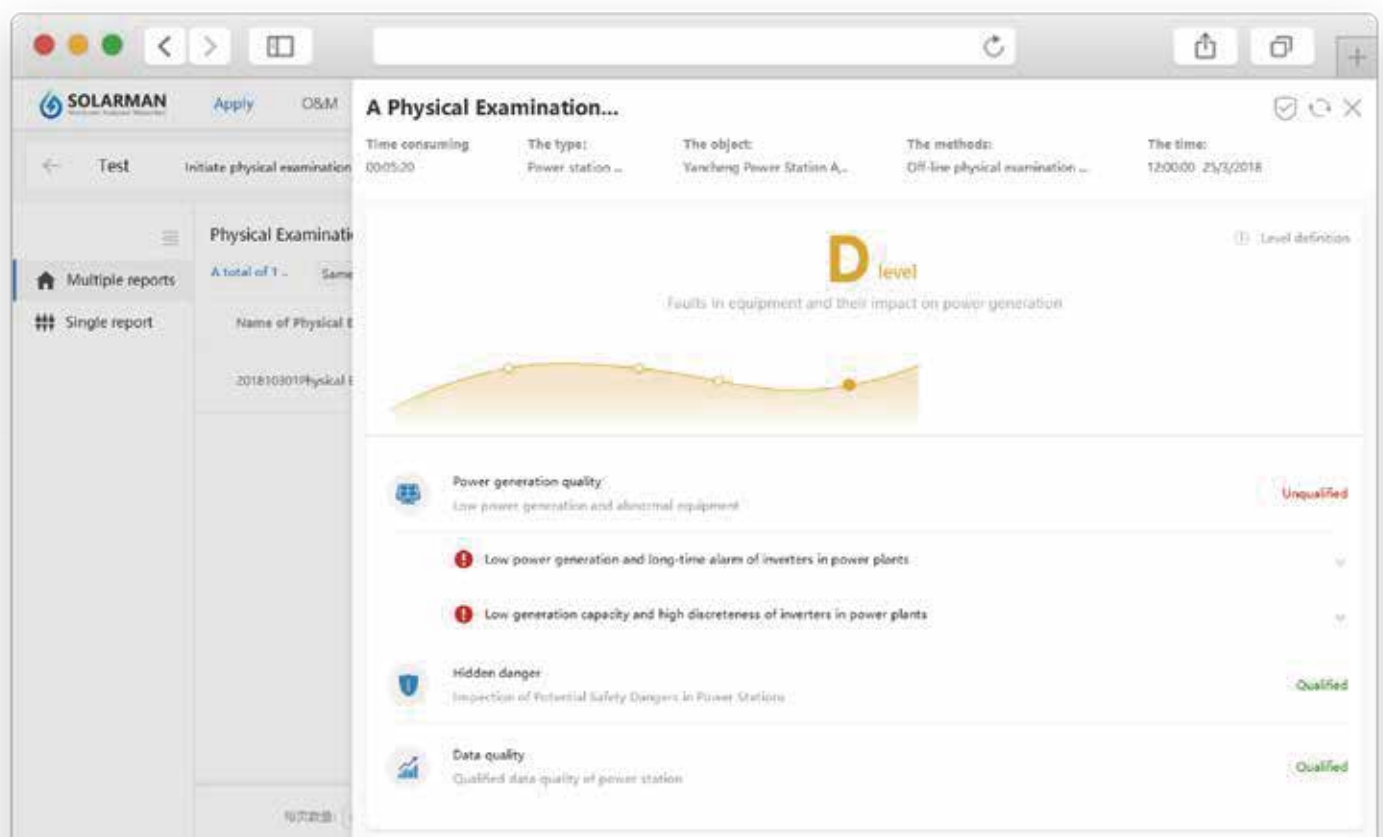
Key features of SOLARMAN Business – Device Sector:

- Fast adaption with new devices and protocols;
- Remote upgrade device firmware in batches;
- Intelligent device controls under local/remote mode, fast response within seconds;
- Customization for warnings and alerts;
- Great flexibility for real-time data processing and authorization.

SOLARMAN Business - PV Plant Management

SOLARMAN Business perfectly fulfills the needs of technical professionals, making PV plant management easy, effective and efficient.

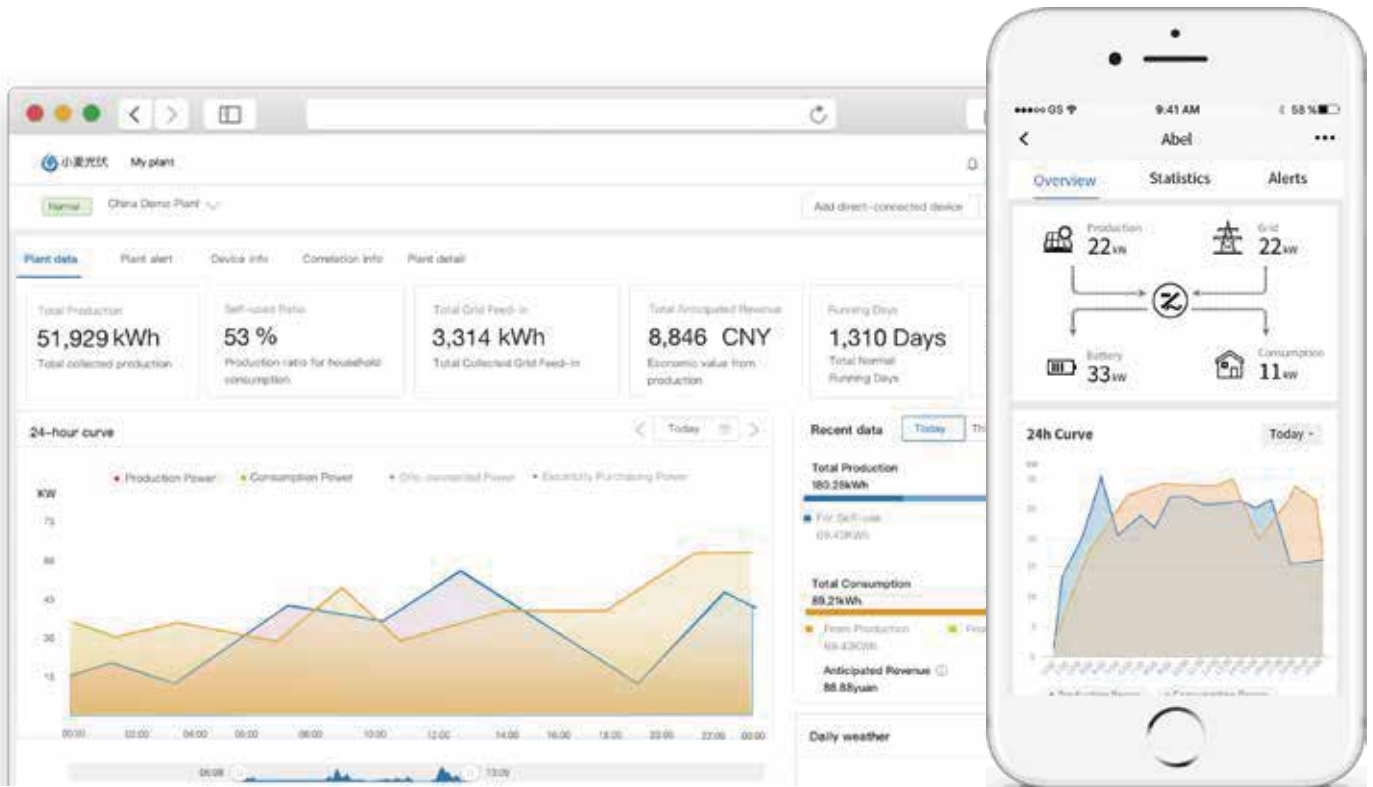
Besides visualizing real-time data and analyzing performance indexes, i.e. PR, the product enables comparison among different plants, and comparison between plant's actual generation and weather-based simulation. The expanded performance analysis gives extra meaningful messages for plant management.



Furthermore, a powerful function – “Physical Examination” - of SOLARMAN Business allows O&M staff to run a diagnosis program for selected PV plants, and the results of plant performance rankings and possible defects/advice will be given to customers for taking following actions, such as work order release, site investigation and fault recovery.

SOLARMAN Smart - An Energy Expert Around You

SOLARMAN Smart monitors and visualizes all conditions of smart devices in end-user's home, the household energy management has never been easier.



Key features of SOLARMAN Smart:



Fast setup - completes a plant setup after a few steps and adds smart devices as you need;



Graphic display - understands power generation & consumption status from a glimpse of energy flow chart;



Accurate analysis - calculates and reports energy usage pattern and give reasonable advice;



Device management - adds, deletes, changes, controls any devices at any time, any place;



Plant management - shares a plant to a service provider or any friends within SOLARMAN platform, creating great convenience.



Stick Logger

4G/GPRS/WiFi/Ethernet

SOLARMAN stick logger supports GPRS, WiFi, 4G, Ethernet and other communication method. Furthermore, stick logger supports RS485/RS232/RS422/TTL and other serial communication. With the design of multi-cover, it adapts to a vast majority of inverters. By collecting operating status and power generation of inverter, stick logger can run a long-term and efficient monitoring of PV system, which increases work efficiency and reduces management cost significantly. With its extended functions, such as GNSS, power-off reminder, Bluetooth, stick logger enables a quick configuration at site and an easy plant O&M.

- External indicator lights, ensuring collection status at a glance;
- Plug and play, no extra power supply is required;
- Independent module, protecting internal parts of inverter;
- Waterproof design, resistant to bad weather;
- External design, easy to replace faulty equipment;
- Review data and yields via SOLARMAN Smart at anytime and anywhere;
- Extended function: Power-off reminder;
- Extended function: GNSS.



| Product Model | LS4G-5 | LS4G-4 | LSW-5 | LSW-3 | LSG-3 | LSE-3 |
|--------------------------------|--|------------------|------------------|------------------|--------------------|------------|
| Remote Communication Interface | 4G | 4G | 2.4G WiFi | 2.4G WiFi | GPRS | LAN |
| GNSS | <20m | — | — | — | — | — |
| Antenna | Internal Antenna | External Antenna | Internal Antenna | External Antenna | External Antenna | — |
| Data Interface | RS485/RS232/TTL | | | | | |
| Working Voltage | DC 5-12V | | | | | |
| Working Power | 3.5W | 3.5W | 1.5W | 1.5W | 3W | 1W |
| SIM Card | Chip Card/MicroSIM | | — | — | Chip Card/MicroSIM | |
| Memory | 8M Flash | 8M Flash | 8M Flash | 2M Flash | 2M Flash | 2M Flash |
| Working Temperature | -40 C ~ +85 C | | | | | |
| Working Humidity | <90% (No Condensation) | | | | | |
| No. of Connections | One | | | | | |
| Serial Communication Rate | 9600bps (1200-115200bps Configurable) | | | | | |
| Data Acquisition Interval | Default: 5 mins (1-15 mins Configurable) | | | | | |
| User Configuration | BT/APP | APP | BT/APP/Web | APP/Web | APP/BT | Web/APP |
| Firmware Upgrade | BT/Remote | Remote | BT/Remote/Web | Remote/Web | Remote | Remote/Web |
| Real-time Control | √ | | | | | |
| Data Resuming | √ | | | | | |
| Power-off Reminder | √ | √ | √ | — | — | — |

Pro Logger

4G/GPRS/WiFi/Ethernet



SOLARMAN pro logger is applicable to various types of devices, including inverter, combiner box, weather station, meter and etc.. It is specially designed for industrial&commercial scenarios, which can be mounted both on DIN-rail and the wall.

Featuring in customization, it perfectly adapts to different kinds of distributed PV projects. Moreover, it furnishes plant developers, installers, O&M service providers with sophisticated tools to increase work efficiency and reduce management cost.

- Multiple-way RS485, RS232, RS422, CAN interface; Supports P1 meter;Accommodate hundreds of devices;
- Support magnetic latching relay external control (AC 250V/16A);
- 8GB TF card (Standard), 20-year storage; Data in SOLARMAN platform will be saved permanently;
- Multiple-way digital/analog input interface; Support grid dispatching, sensor and other scenarios;
- Through SOLARMAN Business, users can achieve an intelligent plant management.
- Dual SIM cards, supporting grid-tied project that requires private network power supply;
- Support static page configuration or upgrade, local/remote multi-mode monitoring;
- Support importing data and fault history via USB;
- Embedded ultra-capacitor supports power-off reminder; Simplify plant O&M significantly;

| Product Model | | LP-2 |
|---------------------|---------------------------|---|
| Wireless Parameters | Remote Communication 1 | 4G |
| | Remote Communication 2 | 4G |
| | Remote Communication 3 | LAN |
| | Antenna | Sucker Antenna |
| | Local Configuration | WiFi (Embedded Antenna) |
| Hardware Parameters | Input Voltage | DC 15V~60V |
| | Working Power | <10W |
| | Output Voltage | DC 12V 500mA |
| | Indicator Light | LED x4 |
| | Memory | 128MByte NAND FLASH 8GB TF Card (Optional) |
| | Analog / Digital Input | Analog Input x4 / Digital Input x6 |
| | Digital Output | AC 16A 250V Magnetic Latching Relay Output x2 |
| | USB | USB 2.0 |
| | S0 in | 2 |
| | RS485 | x4 |
| | RS232 | x1 |
| | CAN | x1 |
| | P1 Meter | x1 |
| | Internal Clock | √ |
| | Power-off Reminder | √ |
| | Working Temperature | -20 C ~ +60 C |
| | Relative Humidity | 5%-95% (No Condensation) |
| | Dimension | 240*118*49mm |
| | IP Grade | IP20 |
| | Installation Method | 35mm Din-Rail Mount |
| Software Parameters | No. of Connections | 1-128 |
| | Data Acquisition Interval | Default: 5 mins (1-15 mins Configurable) |
| | User Configuration | AT+Instruction Set, Remote Server |
| | Firmware Upgrade | Remote Server/ Local |
| | Real-time Control | √ |
| | Data Resuming | √ |

DIN-Rail Logger

4G/GPRS/WiFi/Ethernet

By collecting operating status and power generation of inverter, meter and other devices, DIN-Rail logger can run a long-term and efficient monitoring of PV system.

Logger can connect to multiple devices via RS485/RS422/RS232 and other interfaces. Meanwhile, remote monitoring cloud platform (SOLARMAN Portal) provides powerful data support for the logger.

Logger sends the data to the monitoring platform via WiFi/Ethernet/GPRS. The real-time status and historical data can be displayed with graphs, enabling intuitive and clear understanding of PV system.



Standard DIN-Rail Mount



Suitable for 35mm DIN-Rail mount;

Remote Upgrade



Remote upgrade and system debugging, easy for O&M;

Timely alert report, helping users understand risks and problems about their plants in time;



Pair with DIN-rail power supply device, achieving power-off reminder function.



Data Resuming



Ensure data integrity;

Alert Notification



Real-time alerts with timely notification, ensuring fast troubleshooting;

Review data via APP/Web at anytime and anywhere;





Logger+Meter+More Devices

| Product Model | LD4G-2 | LDG-2 | LDW-1 |
|--------------------------------|--|--|-----------------------------------|
| Remote Communication Interface | 4G | GPRS | WiFi |
| Working Frequency | LTE-FDD, LTE-TDD, WCDMA TD-SCDMA, CDMA, GSM | GSM850/EGSM900/DCS1800/PCS1900MHz | 2.142GHz~2.484GHz |
| No. of Connections | 1-16 | 1-16 | 1-10 |
| Ethernet | - | - | 10/100M (Adaptive Network) |
| Working Voltage | DC 4.7-15V | DC 4.7-15V | DC 4.7-15V |
| Working Power | 3.8W | 3W | 1W |
| Local Communication | RS485/RS422/RS232 | | |
| Serial Communication Rate | 1200-115200bps Configurable | | |
| Data Acquisition Interval | Default: 5 mins (1-15 mins Configurable) | | |
| Memory | 2M Flash (512K-16M Optional) | | |
| User Configuration | AT+Instruction Set, Remote Server | AT+Instruction Set, Remote Server (BT3.0+EDR Configuration&Access) | AT+Instruction Set, Remote Server |
| SIM Card | MicroSIM | Chip Card/MicroSIM | - |
| Antenna | GPRS Small Antenna (Sucker Antenna Optional) | | |
| Working Temperature | -40 C~+85 C (Battery Version: -20 C~+60 C) | -40 C~+85 C (Battery Version: -20 C~+60 C) | -40 C~+85 C |
| Working Humidity | < 90% (No Condensation) | | |
| Dimension | 91mm×76mm×18mm | | |
| Installation Method | 35mm DIN-Rail | | |

DIN-Rail Power Supply Device

DIN-Rail power supply device is used to provide DC 5V input for DIN-Rail logger or other equipment at site. According to real situation, it would turn AC 85-265V or DC 24V power input to DC 5V as output. In addition, an embedded capacitor will power DIN-Rail logger for another 20s in case of power outage, enabling data logger to send out a warning alert.



Wide Voltage Design

AC Voltage Input Range: AC 85V-265V

DC Voltage Input Range: DC 5V-24V

High Power Output

Support DC 5V, 2000mA output

Power-off Reminder

Equipped with an embedded capacitor, easy for O&M

Easy Installation

Standard 35mm DIN-Rail mount



| DIN-Rail Power Supply Device (Capacitive) | | |
|---|------------------------|-----------------------|
| Hardware Parameters | Input Voltage | AC 85~265V/DC 5~24V |
| | Output Current&Voltage | DC 5V, 2000mA |
| | Indicator Lights | AC IN: AC Power Input |
| | | DC IN: DC Power Input |
| | Working Temperature | -40 C ~+75 C |
| | Storage Temperature | -45 C ~+90 C |
| | Dimension | 91mm×76mm×18mm |
| | Installation Method | DIN-Rail |

Smart Meter





SOLARMAN smart meter is applied for energy management purpose, and it works to measure and control electricity consumption of apartment renting, household and industrial electricity, charging station, PV plant, intelligent building, chain stores, communication stations and etc.,. It features in high reliability, high accuracy, compact size and easy to install, etc.

Single-Phase Meters

- Compact size, 2P width.
- Embedded relay, supports ON/OFF switch locally/remotely.
- Protection functions in case of overvoltage, undervoltage, overcurrent, overload.
- Embedded communication module, support GPRS, NB-IoT, WiFi, 4G, etc.
- Measuring range: 0~60A, 0~13200w.
- Embedded high-capacity capacitor, able to trigger power-off alert.

Three-Phase Meters

- 2P width, less space occupied in distribution panel .
- Embedded communication module, support GPRS, NB-IoT, WiFi, 4G and etc.
- Max. measurement: 6 circuits with single CT, or 2 circuits with three-phase CTs.
- Open-type CT, easy for installation.
- Protection functions in case of overvoltage, undervoltage, overcurrent, overload.

| | Single-Phase | | Three-Phase | |
|-----------------------------|--|--|--|---|
| Product Name | DIN-Rail Single-Phase Meter  | Single-Phase Remote Control Meter  | DIN-Rail Three-Phase Meter  | Six-circuit Multi-function Meter  |
| Product Model | DDS122-D | DDZY422-D2 | DTSD422-D | DTSD422-D3 |
| Dimension (mm) | 92*76*18 | 110*77*36 | 91.5*76*36 | 91.5*85*36 |
| Remote Communication | NA | 4G/WiFi/GPRS/NB-IoT | NA | 4G/WiFi/GPRS/NB-IoT |
| Serial Communication | RS485 | | RS485 | |
| Rated Voltage | 220V | | 3x220/380V | |
| Frequency | 50/60Hz | | 50/60Hz | |
| Rated Current | 5 (40) A | 5 (60) A | 3x6A/100A | 6x6A/100A |
| Rated Power | 8.8kW | 13.2kW | 66kW | |
| Power Consumption | 0.5W | 3W | 0.5W | 3W |
| Accuracy | 1 | | 1 | |
| Two-way Metering | √ | | √ | |
| Working Temperature | -25℃~+60℃ | -30℃~+70℃ | -25℃~+60℃ | -30℃~+70℃ |
| Power Supply | 1 circuit with single-phase CT | | 1 circuit with three-phase CTs/ 3 circuits with single-phase CT | 6 circuits with single-phase CT/ 2 circuits with three-phase CTs |
| Measurement | High Accuracy Sampling Mn-Cu | | Clip-On CT | |
| No. of CTs | NA | | 3 | 6 |
| Electrical Parameters | Voltage, Current, Active Power, Active Energy, Frequency, Power Factors | Voltage, Current, Active Power, Active Energy, Time-sharing Power, Frequency, Power Factors | Voltage, Current, Active Power, Apparent Power, Active Energy, Apparent Power, Split-phase Energy, Time-sharing Power, Reactive Power, Reactive Energy, Frequency, Power Factors | |
| Remote Switch | × | √ | × | |
| Automatic Settlement | × | √ | √ | |
| Data-frozen | × | Point-frozen, Daily-frozen, Scheduled-frozen | Point-frozen | |
| Power-off Reminder | × | √ | × | |
| Protection | × | Overvoltage/Undervoltage, Overcurrent, Overload (break-off) | × | Overvoltage/Undervoltage, Overcurrent, Overload (Alert) |
| Data Acquisition (Inverter) | × | √ | × | √ |
| Installation Method | 35mm DIN-Rail | | 35mm DIN-Rail | |

Data Logger

Ethernet



SOLARMAN data logger is specially designed for Distributed Household/Industrial&Commercial plants. With its brand new design, it features in high reliability, high accuracy and high efficiency. Featuring in customization, it perfectly adapts to different kinds of distributed PV projects. Moreover, it furnishes plant developers, installers, O&M service providers with sophisticated tools to increase work efficiency and reduce management cost.

For household plants, it supports the monitoring of inverter, energy storage battery and other devices. For industrial&commercial plants, it is durable. And it supports inverter, combiner box, meter, weather station and other devices.

Standard Model: WiFi 4G optional





Equipped with BT, optimizing networking experience and simplifying local configuration;



Support RF local networking, no communication wiring is required.



| Product Name | Data Logger | Data Logger |
|---------------------------|--|--|
| Product Model | EMH-2  | EMB-2  |
| Usage Scenario | Distributed Household Plant | Distributed Industrial&Commercial Plant |
| No. of Connections | 10 | 32 |
| Working Voltage | DC 5V | AC 85-265V |
| Consumption | 3.5W | 3.5W |
| Remote Communication | WiFi (2.4GHz) | WiFi (2.4GHz) |
| | Ethernet x2 | Ethernet x1 |
| | 4G (Optional) | 4G (Optional) |
| | NB (Reserved) | NB (Reserved) |
| Remote Communication | Slot SIM (IP20) | Slot SIM (IP65) |
| | BT | BT |
| | RF (Optional) | RF (Optional) |
| Remote Communication | LoRa (Reserved) | LoRa (Reserved) |
| | Configuration | APP/Remote |
| Serial Communication | RS485 x2 (RS232 compatible) | RS485 x1 |
| Data Acquisition Interval | 5min | 5min |
| Memory | 128M NAND FLASH | 128M NAND FLASH |
| | - | 8G TF (Optional) |
| Extended Function | Data Resuming | Data Resuming |
| | Real-time Control | Real-time Control |
| | - | Power-off Reminder |
| Dimension (mm) | 160x85x27 | 150x120x75 |
| Enclosure | PC | Aluminium Alloy |
| Installation Method | Flatwise/Suspension/DIN-Rail | Suspension |
| IP Grade | IP20 | IP65 |
| Working Temperature | -30 C ~+70 C | -30 C ~+70 C |
| Working Humidity | 10%-90% (No Condensation) | 10%-90% (No Condensation) |

RF Gateway Stick Logger (RF)

Ethernet



SOLARMAN RF series include RF Gateway and Stick Logger (RF). RF gateway supports local networking, no communication wiring is required. Furthermore, RF gateway features in long communication distance and strong through-wall ability. One RF gateway can connect to multiple stick logger (RF).

- No communication wiring is required, decreasing construction cost;
- Long communication distance, reaching 200m without shelter;
- Strong through-wall ability, 2 reinforced concrete walls at max.;
- Support multi-networking, high efficiency in data acquisition.

| RF Gateway | | Stick Logger (RF) | |
|---------------------------|---|----------------------|---------------------------|
| Product Model | RF-100 | Product Model | RF-100 |
| Remote Communication | Ethernet | Local Communication | RF |
| Local Communication | RF | Serial Communication | RS485/RS232/TTL |
| No. of Connections | 10 | No. of Connections | 1 |
| Local Networking Distance | 200m (Without shelter) Through-wall Ability: 2 reinforced concrete walls (15cm) (Networking distance reaches 20m if going through 2 walls.) | Working Voltage | DC 5V-12V |
| Working Voltage | DC 5V | Memory | 8M Flash |
| Memory | 8M Flash | Working Temperature | -30 C ~+70 C |
| Configuration | APP/Web | Working Humidity | 10%-90% (No Condensation) |
| Working Temperature | -30 C ~+70 C | | |
| Working Humidity | 10%-90% (No Condensation) | | |

Weather Station

SOLARMAN weather station is specifically designed for PV system. It provides a comprehensive environmental monitoring solution for users including irradiance, ambient temperature and humidity, wind direction and speed, and module temperature. With the combination of accurate real-time data, durable products and powerful online platform, SOLARMAN helps users evaluate yield efficiency in a more comprehensive and convenient way.



Accurate real-time and historical data, enabling a comprehensive evaluation of system performance;



Compatible with SOLARMAN data logger, ensuring simple configuration and lower O&M cost;



SOLARMAN platform provides visualized meteorological data;



Real-time alerts with timely notification, ensuring fast troubleshoot;



Standard sensors for general demands (High accuracy sensor for project with high demands).

| Product Model | WP-2S |
|---|--|
| Irradiance (Sub-reference Level) | ISO 9060:1990 (Sub-reference Level) Sensitivity: 7 ~ 14 μ V/W/m ² Instability (Year): <0.5% Measuring Range: 0 ~ 4000W/m ² Spectral Range: 270 ~ 3000 μ m Zero Offset (No ventilation) (a) Thermal Irradiance (200W/m ²): <7W/m ² (b) Temperature Variation (5K/h): <2W/m ² Nonlinear: <0.2% Directional Response (80°, 1000W/m ² at max.): <10W/m ² Spectral Selectivity (350 ~ 1500nm): <1% Tilt Response (0°-90°, 1000W/m ²): <0.2% Temperature Response (-10 C ~ +40 C): <1% Visual Angle: 180° |
| Irradiance (Level 1) | Sensitivity: 7 ~ 14 μ V/W/m ² Instability (Year): \pm 2% Measuring Range: 0 ~ 2000W/m ² Cosine (Deviation between solar altitude angle 10° in sunny day and ideal value): \leq \pm 2% Spectral Range: 0.28 ~ 3.0 μ m Temperature Characteristic (-20 C ~ +40 C): \pm 2% Nonlinear: \pm 2% Visual Angle: 180° Measurement Accuracy: 2% |
| Irradiance (Level 2) | Sensitivity: 7 ~ 14 μ V/W/m ² Instability (Year): <2% Measuring Range: 0 ~ 2000W/m ² Cosine (Deviation between solar altitude angle 10° in sunny day and ideal value): \leq \pm 5% Spectral Range: 0.28 ~ 3.0 μ m Temperature Characteristic (-20 C ~ +40 C): \pm 5% Nonlinear: \pm 5% Visual Angle: 180° Measurement Accuracy: 5% |
| Ambient Temperature | Measuring Range: -50.0 C ~ +80.0 C Resolution: 0.1 C Accuracy: \pm 0.1 C Working Environment: Temperature -40 C ~ +80 C Humidity \leq 100%RH |
| Ambient Humidity | Measuring Range: 0.0 ~ 100.0%RH Resolution: 0.1%RH Accuracy: \pm 2% (\leq 80%), \pm 5% (>80%) Working Environment: Temperature -40 C ~ +80 C Humidity \leq 100%RH |
| Wind Direction | Measuring Range: 0 ~ 360° Resolution: 3° Accuracy: \pm 3° Startup Wind Speed: \leq 0.5m/s Working Environment: Temperature -40 C ~ +80 C Humidity \leq 100%RH |
| Wind Speed | Measuring Range: 0 ~ 70m/s Resolution: 0.1m/s Accuracy: \pm (0.3+0.03V)m/s Startup Wind Speed: \leq 0.5m/s Working Environment: Temperature -40 C ~ +80 C Humidity \leq 100%RH |
| Module Temperature | Measuring Range: -50 C ~ +80 C Resolution: 0.1 C Accuracy: \pm 0.1 C Working Environment: Temperature -40 C ~ +80 C Humidity \leq 100%RH |
| Height | 1.5m |
| Power Supply&Communication Junction Box | Power: AC 230V, COM: RS485 |
| IP Grade | IP65 |



Part of Supported Brands

ABB

AEG
POWER SOLUTIONS

Alpha·ESS

Afore 艾伏

BYD

CHNT
POWER

DELTA 台达

Deye 德业

EAST

Fronius

GOODWE

Growatt

GE

hoymiles 禾迈

HUAWEI

invt

KACO
new energy.

KELONG
利华技术

KSTAR

MOSO



IGEN

IGEN Tech Co., Ltd.

Address: A2-405, Tian'an iPark, No. 228, Ling Hu Avenue, Wuxi, Jiangsu, China

Tel: +86-510-68005664

Fax: +86-510-81816208

Email: info@solarmanpv.com

Website: www.solarman.cn



Monitored . Analyzed . Networked
for Smart Energy